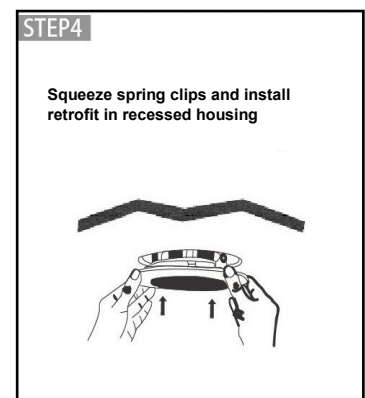
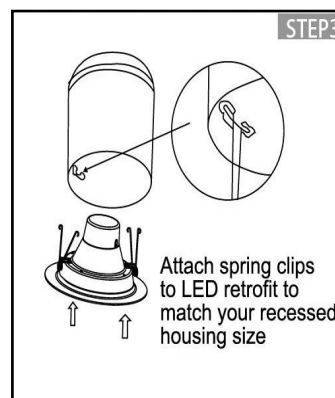
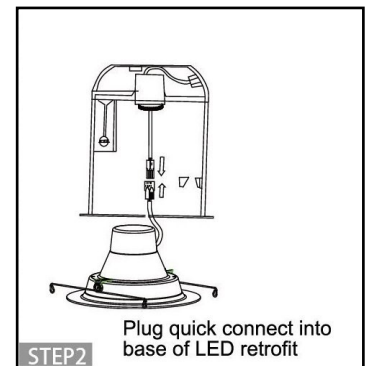


## INSTALLATION INSTRUCTIONS 6" RECESSED LED DOWN LIGHT

**Caution:** To avoid possible electric shock, be sure that power supply is turned off at fuse box or circuit breaker before attempting installation or servicing of the fixture. For safest operation read and become familiar with complete installation instructions prior to use.

### INSTALLATION OF RECESSED LED DOWNLIGHT INTO RECESSED CAN

1. Remove socket mounting bracket and plate from inside existing recessed housing (if installed)
2. Remove socket from plate and discard plate.
3. Screw Edison base into socket in recessed housing (figure step 1).
4. Plug the fixture connector into the Edison base (figure step 2).
5. Squeeze the LM-N6 torsion springs together (one on each side) where indicated and install into torsion spring brackets inside recessed housing (figure step 3).
6. Carefully route wires into housing and push module up flush to ceiling surface (figure step 4).



### LIMITED WARRANTY

The limited warranty set forth below is given by Lumira International Corporation ("Lumira") with respect to the lighting product packaged with this limited warranty (the "Product"). Your Product, when delivered to you in new condition in its original packaging, is warranted against defects in materials or workmanship as follows: for a period of five (5) years from the date of original purchase, defective parts or a defective Product returned to Lumira, or its authorized service providers, as applicable, and proven to be defective upon inspection, will be repaired, or exchanged for a new Product, as determined by Lumira, or the authorized service provider. This limited warranty covers all defects encountered in normal use of the Product, and does not apply in the following cases: (a) Loss of or damage to the Product due to abuse, mishandling, alteration, accident, electrical current fluctuations, failure to follow operating, maintenance or environmental instructions prescribed by Lumira in writing or services performed by someone other than Lumira or an authorized service provider. **WARRANTY IS VOID IF PRODUCT IS NOT USED FOR THE PURPOSE FOR WHICH THIS PRODUCT IS MANUFACTURED.** Any complaints you may have regarding the product should be addressed to Lumira International Corporation, 2370 VIA BAR-RANCA ST., HENDERSON, NV 89044USA.

**NO IMPLIED WARRANTY, INCLUDING ANY IMPLIED WARRANTY OF MERCHANTABILITY OR FITNESS FOR A PARTICULAR PURPOSE, APPLIES TO THE PRODUCT AFTER THE APPLICABLE PERIOD OF THE EXPRESS LIMITED WARRANTY STATED ABOVE, AND NO OTHER EXPRESS WARRANTY OR GUARANTY, EXCEPT AS MENTIONED ABOVE, GIVEN BY ANY PERSON OR ENTITY WITH RESPECT TO THE PRODUCT SHALL BIND Lumira. (SOME STATES AND PROVINCES DO NOT ALLOW LIMITATIONS ON HOW LONG AN IMPLIED WARRANTY LASTS, SO THE ABOVE LIMITATION MAY NOT APPLY TO YOU.)**

This device complies with part 15 of the FCC Rules. Operation is subject to the following two conditions: (1) This device may not cause harmful interference, and (2) this device must accept any interference received, including interference that may cause undesired operation.

**CAUTION: Any changes or modifications not expressly approved by the party responsible for compliance could void the user's authority to operate the equipment.**